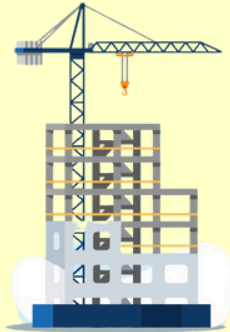
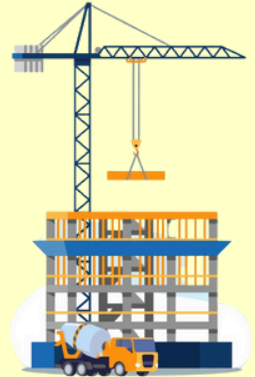
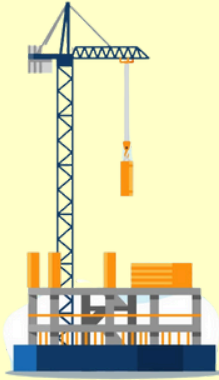
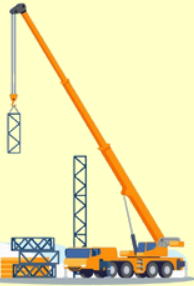




CATALOGUE

2024



CALCUTTA WELDING & LIFTING COMPANY

www.cwlcgroup.com

Our Story

Calcutta Welding & Lifting Company (CWLC) is a family-owned business that has been ensuring the supply of high-quality safety equipment for industrial and construction segments for over 30 years. We are committed to promoting workplace safety and reducing accidents.

CWLC was founded by a group of safety professionals who saw a need for high-quality safety equipment that was affordable and easy to access. Since then, we have been committed to providing our customers with the best possible service and products.



Our Vision !

To be the leading supplier of high-quality human safety equipment, ensuring the protection and well-being of individuals in all environments.

Our Mission !

Our mission is to distribute / supply innovative and reliable safety equipment that meets the highest industry standards.

INDEX

Navigate to the page instantly by clicking the title

Personal Protective Equipment

Eye Protection	Page: 5 - 8
Face Protection	Page: 9
Ear Protection	Page: 10 - 11
Foot Protection	Page: 12 - 20
Hand Protection	Page: 21 - 22
Head Protection	Page: 23 - 25
Respiratory Protection	Page: 26 - 30
Protective Workwear	Page: 31 - 32
Electrical Safety	Page: 33 - 34
Gas Detector	Page: 35

Fall Protection Equipment

Full Body Harnesses	Page: 37 - 40
Hooks & Connectors	Page: 41
Lanyards	Page: 42
Temporary Anchorage Line Systems	Page: 43
Self Contained Safety Kits	Page: 44 - 45
Rope Access & Rescue	Page: 46
Retractable Fall Arrester Blocks	Page: 47
Confined Space Entry	Page: 48
Anchorage	Page: 49
Permanent Life Line System	Page: 50

Respiratory Protection Equipment

SCBA	Page: 52
PAPR	Page: 53
Supplied Air Line System (Respirator)	Page: 54 - 55
Supplied Air Line System (Filter Panel)	Page: 56
Hood	Page: 57

Lifting Equipment

Page: 58 - 60

Fire Extinguisher

Page: 61 - 63

Welding Equipment

Page: 64 - 66

Road Traffic & Sign Safety

Page: 67 - 69



PERSONAL PROTECTIVE EQUIPMENT

PERSONAL PROTECTIVE EQUIPMENT



Eye Protection



ES001: Construction Worker's Choice Spectacle

- Brand: Karam
- High impact resistant optical class 1 Polycarbonate hard-coated lens for scratch resistance
- Variants: Clear, Pink, Green, Smoked

ES005: Executive Choice Spectacle

- Brand: Karam
- High impact resistant optical class 1 Polycarbonate hard-coated lens for scratch resistance
- Variants: Clear, Indoor / Outdoor



ES006: Executive Choice Spectacles



- Brand: Karam
- Adjustable temple length within a range of 14mm to customize the fit on the user's head
- Lens Shade Options: Clear, Indoor/Outdoor, Smoked, Clear antifog

ES007: Prescription-Glasses Wearer's Choice Spectacles

- Brand: Karam
- Can easily fit over most prescription spectacles
- Comes with adjustable temples to provide a better fit for the wearer
- Lens Shade Options: Clear(NG), Clear, Clear antifog



PERSONAL PROTECTIVE EQUIPMENT



Eye Protection



1709: Safety Spectacles with Hardcoat, Clear Lens

- Brand: 3M
- High Impact resistance
- Anti fog Options Available
- International Design with Customised Fit

11850: Safety Goggles Hard Coat Eye Protector

- Brand: 3M
- Ultra light-weight polycarbonate goggle, Hard coated lens
- Lens Color: Clear



11852: 3M Virtua V3 Series 11852, Hardcoat, Clear Lens



- Brand: 3M
- High Impact Resistance, Light Weight, 99% UV Protection
- Nose Bridge , Soft Temples, Highly comfortable, Protects from Regular Dust & Metal Dust , Best for Industrial Usage

SF201AS: 3M SecureFit Protective Eyewear, Clear Lens

- Brand: 3M
- Anti-scratch coating helps protect lenses from scratches, nicks and scrapes that can become distractions
- Lens Color: Clear



PERSONAL PROTECTIVE EQUIPMENT



Eye Protection

SF401AF: Protective Eyewear, Clear Anti-fog Lens



- Brand: 3M
- Padded temple touch points and soft nose pads provide added comfort for long term wear

1621: 3M Safety Goggles



- Brand: 3M
- Polycarbonate, Protects From Chemical Splashes, Clear Lens, Hardcoat, Transparent Goggles, Multipurpose For Industrial, Lab And Hospital

1611: 3M Visitor Spectacle, Antiscratch, Clear Lens

- Brand: 3M
- High Impact Resistance, Light Weight, 99% UV Protection.
- Comfortable, Protects from Regular Dust & Metal Dust , Best for Industrial Usage



E-102: Protective Spectacle Anti Fog



- Brand: Venus
- Lens: Anti fog
- Nose: Bridge One piece integrated design, no lose parts

PERSONAL PROTECTIVE EQUIPMENT



Eye Protection

E-306: Stylish Protective Spectacle One size fits all

- **Brand: Venus**
- **Lens:** i) Anti fog lens, hard coated designed to be abrasion resistant, good visibility
ii) High impact resistant & UV protection



UEE 181: Polycarbonate Unicare Goggle, Frame Type: Nylon

- **Brand: Unicare**
- Fits comfortably over numbered glasses
- Easy Frame adjustments
- Anti Fog, scratch resistance

UEE 194: Max Viz Safety Spectacle

- **Brand: Unicare**
- Scratch-resistant, Lightweight, Comfortable
- Fog resistant, Soft rubber pads



PERSONAL PROTECTIVE EQUIPMENT

Face Protection



ES51: Face Shield

- Brand: Karam
- Size of Window: 203.2mm x 393.7mm

ES61: Welding Shield

- Brand: Karam
- Size of Window: 100mm x 75mm



ES71: Helmet Mountable Welding Shield

- Brand: Karam
- Size of Window: 100mm x 75mm



666g Thermoplastic welding Head Helmet

- Brand: Shree Arc
- Body Material: Thermoplastic



285g 6x12cm Spring Type Shield

- Brand: Shree Arc
- super lightweight and easy to wear
- It can be worn under a helmet or cap



PERSONAL PROTECTIVE EQUIPMENT

Ear Protection

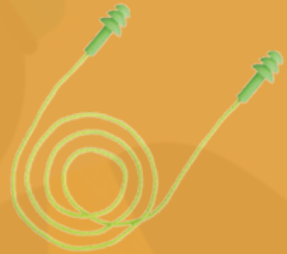


EP02 (Corded): Ear Plugs

- Brand: Karam
- One size fits all ear canals
- Cotton cord secures the ear plugs
- Plug Material: Polyurethane(PU)

EP04 (Corded): Reusable Ear Plugs

- Brand: Karam
- Washable & reusable ear plugs
- Cotton cord secures the ear plugs
- Plug Material: Thermoplastic rubber(TPR)



EP21: Ear Muffs Classic

- Brand: Karam
- Soft cushioned pads for good seal against noise
- Consists of special ABS ear cups for durability
- Material: Acrylonitrile butadiene styrene(ABS)

EP23: Helmet Attachable Ear Muffs

- Brand: Karam
- Spring loaded stand-off function to press firmly against the ear for better seal against noise
- Easy snap on/off mechanism for helmet mounting
- Material: Acrylonitrile butadiene styrene(ABS)



PERSONAL PROTECTIVE EQUIPMENT

Ear Protection



1110: Soft Ear Plugs

- Brand: 3M
- Stiffest of the poly-urethane foam ear plugs
- Noise Reduction Rating (NRR) 29 dB, CSA Class AL
- Plug Material: Polyurethane(PU)

1270: Ear Plug Corded

- Brand: 3M
- Made of soft and snug silicone for better hearing protection
- NRR (Noise Reduction Rating): about 25dB
- Plug Material: Foam



Peltor H10A Optime 105 Earmuff

- Brand: 3M
- Noise Reduction Rating of 30dB
- Superior comfort, fit and hearing protection
- Patented twin-cup design

Venus Safety H-103 Disposable Ear Plug

- Brand: Venus
- Reduces noise ratio up to 33 dB
- Superior protection
- Hygienic and eco-friendly



PERSONAL PROTECTIVE EQUIPMENT

Foot Protection



FS204: Flytex Blue Sporty Safety Shoes

- Brand: Karam
- Provides protection against electrical hazards
- Upper: Flyknit fabric upper with black and blue color print

FS208: Flytex Black Slip-on Sporty Safety Shoes

- Brand: Karam
- Provides protection against electrical hazards
- Upper: Flyknit fabric upper with black and blue color print



FS213: Flytex Red and Grey Sporty Safety Shoes

- Brand: Karam
- Shock Absorbant Heel & Anti-fatigue
- Upper: Flyknit fabric upper with black and blue color print

Available Size:
3 - 13

FS210: Flytex Black Sporty Safety Shoes

- Brand: Karam
- Provides protection against electrical hazards
- Upper: Flyknit fabric upper with black and orange color print



PERSONAL PROTECTIVE EQUIPMENT

Foot Protection



FS05: Worker's Leather Safety Shoes



- Brand: Karam
- Has a steel toe made from carbon steel that protects the user's feet from impacts
- 100% Grain Leather, Slip Resistant Tread Pattern & Anti-static
- 5mm Anti-fatigue molded EVA/PU in-socks laminated with netlon

FS21: Workman High Ankle Black Leather Safety Shoes



- Brand: Karam
- Lightweight shoes which are highly durable and have ultimate shock absorption
- 5mm Anti-fatigue molded EVA/PU in-socks laminated with netlon

FS215: Flytex Red and Black Sporty Safety Shoes



- Provides protection against electrical hazards
- Breathable soft fabric lining
- Upper: Flyknit fabric upper with black and orange color print

Available Size:
3 - 13



PERSONAL PROTECTIVE EQUIPMENT

Foot Protection



RIDER®

RIDER SHEID 1105



RIDER INDUS 2205



Specifications		
Upper	Material	Genuine SUEDE Leather Upper With Leather BUFF CG toe and Padded Collar
Inner Lining	Material	Cushion Laminated Spacer (Airmesh) Lining
In socks	Material	High density cushion molded in socks for extra comfort
Toe	Material & Specification	Steel Toe Resistance of 200J & Confirming to IS-15298-Part-2 :2002
Insole	Material	Nonwoven
Eyelets	Material	Brass D-Rings
Lace Thread	Material	Nylon Round Nylon.
Outsole	Material & soling Process	Sole made up of D/D PU color Black/Grey with Direct Injection Dual Density, Oil, Acid & Petrol and Heat resistant upto 120°C For 1 minute exposure
Sizes		5-11 sizes only
Packing	Standard	Each pair packed in individual shoe box & 10 such boxes in a multiply carton.
Brand	Name	RIDER

Specifications		
Upper	Material	Genuine Barton Leather Upper With Padded Collar
Inner Lining	Material	Cushion Laminated Fabric Lining
In socks	Material	Cambrella with EVA base for better comfort
Toe	Material & Specification	Steel Toe Confirming to IS-15298 Part-2 2002
Insole	Material	Nonwoven
Eyelets	Material	Good Quality Aluminum eyelets
Lace Thread	Material	Nylon Round Nylon.
Outsole	Material & soling Process	Sole made up of PU color Black with Direct Injection Molded, slip resistant and heat resistant upto 120°C For 1 minute exposure
Sizes		5-12 sizes only
Packing	Standard	Each pair packed in individual shoe box & 10 such boxes in a multiply carton.
Brand	Name	RIDER



PERSONAL PROTECTIVE EQUIPMENT

Foot Protection



RIDER SHIELD 3305



Specifications		
Upper	Material	Genuine Leather BUFF bartan print with Padded Collar
Inner Lining	Material	Cushion Laminated Spacer Grey (Airmash) Lining
In socks	Material	Eva laminated in socks for extra comfort
Toe	Material & Specification	Steel Toe Resistance of 200J & Confirming to IS:15298-Part-2 :2002
Insole	Material	Nonwoven
Eyelets	Material	Good quality metal eyelets
Lace Thread	Material	Nylon Round Nylon.
Outsole	Material & soling Process	Sole Made Up Of D/D PU Colour Black/Grey With Direct Injection Molded Slip Resistant And Heat Resistant Up To 120°C For 1 Minute Exposure
Sizes		5-11 sizes only
Packing	Standard	Each pair packed in individual shoe box & 10 such boxes in a multiply carton.
Brand	Name	RIDER



RIDER INDUS 4404



Specifications		
Upper	Material	Genuine PU Coated Leather Upper With Padded Collar
Inner Lining	Material	Cushion Laminated Fabric Lining
In socks	Material	Cambrella with EVA base for better comfort
Toe	Material & Specification	Good Quality Steel toe of 100J
Insole	Material	Nonwoven
Eyelets	Material	Brass
Lace Thread	Material	Nylon Round Nylon.
Outsole	Material & soling Process	Sole made up of PU color Black with Direct Injection Molded, slip resistant and heat resistant upto 120°C For 1 minute exposure
Sizes		5-12 sizes only
Packing	Standard	Each pair packed in individual shoe box & 10 such boxes in a multiply carton.
Brand	Name	RIDER



PERSONAL PROTECTIVE EQUIPMENT

Foot Protection



RIDER PRO 9905



Specifications		
Upper	Material	Genuine Barton Leather Upper With Padded Collar
Inner Lining	Material	Cushion Laminated Fabric Lining
Innersocks	Material	Cambrella with EVA base for better comfort
Toe	Material & Specification	Steel Toe Confirming to IS:15298-Part-2 :2002
Sole	Material	Nonwoven
Eyelets	Material	Good Quality Aluminum eyelets
Eyelet Thread	Material	Nylon Round Nylon.
Outsole	Material & Soling Process	Sole Made Up Of PVC Colour Black With Direct Injection Moulded Slip Resistant And Heat Resistant Up To 120°C For 1 Minute Exposure
Sizes		5-11 sizes only
Packing	Standard	Each pair packed in individual shoe box & 20 such boxes in a multiply carton.
Brand	Name	RIDER



PERSONAL PROTECTIVE EQUIPMENT



Foot Protection



BRAND: EURO
MODEL: BRICK HT 01



BRAND: EURO
MODEL: TERMINATOR HI S1



BRAND: EURO
MODEL: BLADE S1



Women's Shoe

BRAND: EURO
MODEL: LUCY S1



BRAND: EURO
MODEL: MAXX S1



BRAND: EURO
MODEL: ENERGY S1



PERSONAL PROTECTIVE EQUIPMENT

Foot Protection



**BRAND: HILLSON
MODEL: U4**



**BRAND: HILLSON
MODEL: BESTON HIGH ANKLE**



**BRAND: HILLSON
MODEL: WORKOUT HIGH ANKLE**



**BRAND: HILLSON
MODEL: PANTHER**



**BRAND: HILLSON
MODEL: SAMURAI**



PERSONAL PROTECTIVE EQUIPMENT

Foot Protection



**AVAILABLE
IN ALL
SIZES**



Brand: SHREEARC
Model: ACE



Brand: SHREEARC
Model: BOSS



Brand: SHREEARC
Model: THUNDER



Simple & Elegant

Brand: RIDER
Model: 2205
Size Range: 5 to 12



Leather PVC Molded

Brand: RIDER
Model: 9905
Size Range: 5 to 11

Steelite

High Ankle Safety Shoe
Available Size: 7 & 8



PERSONAL PROTECTIVE EQUIPMENT

Foot Protection



DD-77156
Low Ankle Shoe with Composite Toe
Double Density PU Sole



DD-77161
Low Ankle Shoe with Composite Toe
Double Density PU Sole



DD-7083
High Ankle Shoe With Composite Toe
PU-Double Density Sole



DD-7075
Mid-Ankle Shoe With Steel Toe
PU-Single Density Sole



DD-7164
Slip On Shoe with Steel Toe
Double Density PU Sole



DD-7105
Low Ankle Shoe With Composite Toe
PU-Single Density Sole



DD-7155
Low Ankle Shoe with Steel Toe
Double Density PU Sole



DD-7153
High Ankle Shoe with Steel Toe
Double Density PU Sole



DD-7152
Low Ankle Shoe with Steel Toe
Double Density PU Sole



DD-7085
Low Ankle Shoe With Steel Toe
PU-Double Density Sole



DD-7165
Ladies Low Ankle Shoe with Steel Toe
Double Density PU Sole



DD-7166
Ladies Low Ankle Shoe with Steel Toe
Double Density PU Sole



PERSONAL PROTECTIVE EQUIPMENT

Hand Protection



HS01: Orange Liner with Black Crinkle Latex
Brand: Karam



EP23: HPPE Liner with Grey PU Coating
Brand: Karam



HS22: Black Liner with Black PU Coating
Brand: Karam



HS31: White Liner with Grey Nitrile Coating
Brand: Karam



Valpro® Ranger PVC
Category: Dipped C & S
Brand: Midas



Rubber Hand Gloves
Size: 14 inch
Brand: Midas



Techtion® Aerolite Plus B Cutpro
Category: Cut Resistant
Brand: Midas



Techtion® Xpert Nitro Classic Onepro
Category: Disposable
Brand: Midas



Nitrile Coated Gloves
Brand: Midas



PERSONAL PROTECTIVE EQUIPMENT

Hand Protection



Chemical Resistant Gloves
Brand: Spartan



Leather Safety Gloves
Brand: Spartan

We Offer a Wide Range of Hand Protection Options



Heat Resistant Gloves
Brand: Midas



polka dotted gloves
Brand: Midas

-  Rubber Gloves
-  PU Coated gloves
-  Nitrile Coated Gloves
-  CSD Gloves
-  Cut Resistance Gloves
-  Thin Nitrile Disposable Gloves
-  Chemical Gloves
-  Neoprene Gloves
-  Cryogenic Gloves
-  Kevlar Gloves
-  Leather Hand Gloves
-  Cotton Knitted Gloves
-  Heat Resistant Gloves
-  Polka Dotted Gloves



Frontier® Cotton Knitted
Brand: Midas



Cryogenic Gloves
Brand: Midas



PERSONAL PROTECTIVE EQUIPMENT

Head Protection



PN501: Safety Helmet with Protective Peak with Nape Type Adjustment

Brand: Karam



PN521: Safety Helmet with Protective Peak with Ratchet Type Adjustment

Brand: Karam



PN541: Safety Helmet with Protective Peak with Slider Type Adjustment and Ventilators

Brand: Karam



PN542: Safety Helmet with Protective Peak with Ratchet Type Adjustment and Ventilators

Brand: Karam

Key Features:

- Designed to provide utmost protection to the head in high-risk environments like construction sites, industries, workshops, roadworks, etc.
- Comes with ventilated slots which can be opened/closed with the help of a shutter.

Available Colors:

<p>Super White Apex Grey Fluorescent Green Hybrid Green Lamination Blue Lemon Yellow Red Mint Green Star Blue UT Violet Dark Brown Orange</p>



PERSONAL PROTECTIVE EQUIPMENT

Head Protection



HDHC-T-035NRT-(OG):
Techtion® Orbit Gold Multipro

• Brand: Midas



HDHI-V-036PPL-(GH):
Valpro® Guardian Helmet

• Brand: Midas



HDHI-V-036PRT-(RH):
Valpro® Ranger Plus Helmet

• Brand: Midas



HDHI-V-036PPL-(CH):
Valpro® Commander Helmet

• Brand: Midas

Key Features:

- Lightweight and reliable HDPE Shell with Triple Ribbed design
- Universal slots to easily attach visors and/or ear muff
- Cotton sweatband with 2mm foam for increased comfort
- Nylon chin strap to enhance the fit and protection

Available Colors:





PERSONAL PROTECTIVE EQUIPMENT

Head Protection



SAH 101: Classic
(Light weight & economical head protection helmet)



SAH 103: Nape Strape
Helmet



SAH 105: Shield (Executive nape safety helmet)



SAH 107: Shield (Executive Ratchet safety helmet)



SAF 158: Helmet with Visor
(Attached 6x11 visor with nape helmet face shield)

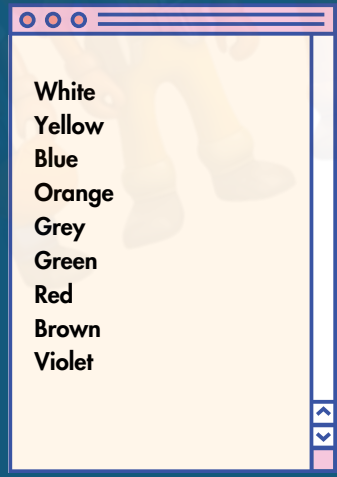


SAF 160: Helmet with
Head Shield

Key Features:

- Head Band: Manual Adjustable & Ratchet
- Sweat Pad: Skin Friendly Sweat Pad and Cushion
- Pad: Pad for Extended working comfort
- Chin Strap: Adjustable
- Size: 520 to 600mm

Available Colors:



PERSONAL PROTECTIVE EQUIPMENT

Respiratory Protection



RFH01 FFP1S Disposable Face Respirator with Headbands

Brand: Karam



RFH01+ FFP1S Disposable Face Respirator with Headbands and Exhalation Valve

Brand: Karam



9000ING Dust Mask
Brand: 3M



9004IN Dust/Mist Respirator

Brand: 3M



Respirator 8210, N95

Brand: 3M



9501 Plus White Respirator Face Mask

Brand: 3M



Respirator 9502+ N95

Brand: 3M



Cupped Particulate Respirator 8822

Brand: 3M



Cupped Particulate Respirator 9913

Brand: 3M



PERSONAL PROTECTIVE EQUIPMENT

Respiratory Protection



Particulate Respirator
9105, N95

Brand: 3M



Disposable Respirator
9332+

Brand: 3M



Half Facepiece Reusable
Respirator 6200

Brand: 3M



Full Facepiece Reusable
Respirator 6800

Brand: 3M



Half Facepiece Reusable
Respirator 7502

Brand: 3M



Rugged Comfort Half
Facepiece Reusable
Respirator 6502

Brand: 3M



Organic Vapor/Acid Gas
Cartridge 6003

Brand: 3M



Organic Vapor
Cartridge 6001

Brand: 3M



Particulate Filter 2091

Brand: 3M



PERSONAL PROTECTIVE EQUIPMENT

Respiratory Protection



PParticulate Filter 7093

Brand: 3M



Ammonia Methylamine Cartridge 6004

Brand: 3M



Multi Acid Gas/Organic Vapor Cartridge 6006

Brand: 3M



FFormaldehyde/Organic Vapor Cartridge 6005

Brand: 3M



V-500 Reusable Half Face Mask

Brand: Venus



V-800 Reusable Half Face Mask

Brand: Venus



V-667 Reusable Full Face Mask

Brand: Venus



Reusable Venus V668 DF Dull Face Mask

Brand: Venus



Venus V-7500 A1E1 P1 S Filter

Brand: Venus





PERSONAL PROTECTIVE EQUIPMENT

Respiratory Protection



V-7800 Gas Filters & Particle Filters

Brand: Venus



**VENUS V-44+
Fold Flat "V" Style**

Brand: Venus



**Venus V-410
Respirator N95 Mask**

Brand: Venus



**VENUS V-20 V
"Convex" V20 Style**

Brand: Venus



**VENUS V-90 V
Convex "Mesh" Style**

Brand: Venus



**Venus Safety V-420 SLV FFP2
Class Respirator with Valve**

Brand: Venus



**Multi Layer VENUS V-430 SLV
FFP3 Face Mask, With Valve**

Brand: Venus



**RVENUS V-414 SLOV-V
"Fold Flat" Style**

Brand: Venus



**Venus V-4400 N95 Anti
Pollution Face Mask**

Brand: Venus



PERSONAL PROTECTIVE EQUIPMENT

Respiratory Protection



Key Benefits of Respiratory Mask

- Designed to help provide comfortable, reliable worker protection against non-oil-based particles
- Can be folded when not in use and slipped easily into the pocket
- Adjustable Nose clip that helps provide a custom fit and secure seal
- Lightweight construction for added comfort that may increase wearer time
- Protects against hazards such as dusts, mists and fume
- This face respirator is designed to filter air contaminants, viruses, bacterial micro-organisms, dust, pollen, and smoke.
- Swept-back design for enhanced field of view and balance
- Plastic filter encasement designed for high heat or wet applications
- Wide field of vision. Polycarbonate, high impact visor
- The outermost layer filters out the largest dust particles.
- The innermost layer preserves the respirator's shape.
- The middle layer is composed of electrostatic filter media.
- Unique, spring-loaded filter cover design simplifies negative pressure user seal checks
- Provides leak-proof and comfortable fit
- Exhalation vent valve allows efficient escape of CO₂ and exhaled air for wearer comfort.
- *Ideal for use:*
 Commercial Buildings, Construction, Food Processing, General Manufacturing, Heavy Infrastructure, Mining, Oil & Gas, Transportation, Industrial Maintenance, Pharmaceutical, etc.,

PERSONAL PROTECTIVE EQUIPMENT

Protective Workwear



PW1201: Regular Protective Workwear with Reflective Tape

- Brand: Karam
- 2 inch reflective tape on chest, back, arms and legs & Plain straight cuff
- Highest quality concealed front zipper used in manufacturing
- Available Colors:

Coverall



We offer a variety of Coverall options

- Cotton Coverall
- Terry Cotton Coverall
- Disposable Coverall
- F.R Coverall

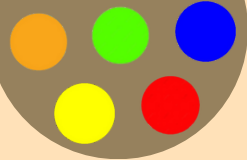


Available options

- 1 Inch Putty
- 2 Inch Putty
- 3 Side Opening



Available Colors



Safety Jackets

PERSONAL PROTECTIVE EQUIPMENT

Protective Workwear



Aluminium Suit



Fire Fighting Suit



PVC Suit



Leather Coat



Rain Coat

Spotlight

Aluminium Suits: Heat Resistance, Reflective Properties, Durability, Lightweight, Fire Resistance, Radiation Shielding, etc.,

Fire Fighting Suits: Heat and Flame Protection, Radiant Heat Protection, Water Resistance, Chemical Resistance, etc.,

PVC Suits: Chemical Resistance, Waterproof, Flexibility, Ease of Cleaning, Cost-Effective, etc.,

Leather Coats: Heat Resistance, Comfort, Durability, Insulation, Chemical Resistance, etc.,

Rain Wear: Waterproof, Visibility, Protection from Cold, Comfort, Ease of Use, Cost-Effective, etc.,



PERSONAL PROTECTIVE EQUIPMENT

Electrical Safety



Electrical Hand Gloves



**Electrical Safety
Helmet**

Electrical safety involves practices and measures designed to protect people and property from the hazards associated with electricity.

This includes ensuring that electrical systems and equipment are installed, operated, and maintained in a safe manner to prevent electric shock, fires, and other accidents.

Key aspects of electrical safety include proper training for those working with electricity, regular inspection and maintenance of electrical systems, using appropriate protective equipment, and following safe work practices.

Electrical safety is essential in both residential and industrial settings to prevent injuries and property damage.



**Honeywell 24401
Rescue Hook**



**Honeywell Discharge
Rod**

PERSONAL PROTECTIVE EQUIPMENT

Electrical Safety



Electrical Shock Proof Shoes



ESD Safety Shoe



Hand Care Electrical Gloves



Honeywell Dielectric Rubber Over Boots



HONEYWELL SALISBURY Arc Flash Clothing Kit

PERSONAL PROTECTIVE EQUIPMENT

Gas Detector



A gas detector is a device that detects the presence of gases in an area, often as part of a safety system. A gas detector can sound an alarm to operators in the area where the leak is occurring, giving them the opportunity to leave. This type of device is important because there are many gases that can be harmful to organic life, such as humans or animals.

Benefits

- 🔗 Early Warning
- 🔗 Health Protection
- 🔗 Risk Reduction
- 🔗 Peace of Mind
- 🔗 Safety
- 🔗 Compliance
- 🔗 Cost Savings



HONEYWELL
Single Gas Detector



HONEYWELL
Multi-Gas Detector

FALL PROTECTION EQUIPMENT



FALL PROTECTION EQUIPMENT

Full Body Harnesses



PN23: Safety Harness with 3 Adjustment & 2 Attachment Points

Brand: Karam

- Supports 140kg, Abrasion Resistant, 3 Point Adjustment, 2 Point Attachment
- Material: Polyester
- Weight: 1.50kg



PN42(01)(DE): Dienoc Dielectric Non-conductive Harness with Work Positioning Belt that has 4 Point Adjustment and 3 Point Attachment

Brand: Karam

- Supports 140kg, 4 Point Adjustment, 3 Point Attachment
- Size: M, L
- Weight: 2.36kg



PN56: Tower and Rescue Harness with 2 Adjustment & 4 Attachment Points

Brand: Karam

- Supports 140kg, Abrasion Resistant, Retro Reflective Thread, 4 Point Attachment, 2 Point Adjustment
- Size: M, L
- Weight: 2.38kg



FALL PROTECTION EQUIPMENT

Full Body Harnesses



Magna 01

Brand: Karam

- Supports 140kg, Abrasion Resistant, Retro Reflective, 3 Point Adjustment, 4 Point Attachment
- Size: M, L
- Weight: 1.75kg



Magna 02

Brand: Karam

- Supports 140kg, Abrasion Resistant, 3 Point Adjustment, 2 Point Attachment
- Size: M, L
- Weight: 2.33kg



Magna 03

Brand: Karam

- Adjustability: Adjustable shoulder, chest straps and thigh straps
- Size: M, L
- Weight: 2.31kg

FALL PROTECTION EQUIPMENT

Full Body Harnesses



K101

Brand: Karam

- Heavy-duty webbing
- High abrasion and UV resistant webbing
- Size: M, L
- Material: Polyester
- Adjustability: Adjustable chest and thigh straps
- Weight: 890gms



K102

Brand: Karam

- Heavy-duty webbing
- High abrasion and UV resistant webbing
- Size: M, L
- Material: Polyester
- Adjustability: Adjustable chest and thigh straps
- Weight: 1.04kg

**With &
Without
Shock
Absorber**



FALL PROTECTION EQUIPMENT

Full Body Harnesses



Full Body Safety Belt with Hook

Brand: Shree Arc

- Made from high quality nylon rope and straps
- Tested on a 120 kg weight iron icon



GIS-01 (CLASS A)

Brand: Garware

- D-Ring designed for fall arrest
- Breaking Strength: 19.6 KN
- Features: Flame Retardant, High Quality, High Breaking Strength



GIS-02 (CLASS L)

Brand: Garware

- Ultimate Safety Harness for ladder climbing and fall arrest
- Breaking Strength: 19.6 KN
- Buckle: Alloy Steel Powder Coated

FALL PROTECTION EQUIPMENT

Hooks & Connectors



PN112: Steel Screw Locking Karabiner

- Brand: Karam
- Material: Alloy steel
- Minimum Breaking Strength: 25kN
- Net Weight: 160.5gm



PN121: Steel Snap Hook

- Brand: Karam
- Material: Alloy steel
- Minimum Breaking Strength: 23kN
- Net Weight: 205.3gm



PN122: Steel Swivel Snap Hook

- Brand: Karam
- Material: Alloy steel
- Minimum Breaking Strength: 23kN
- Net Weight: 334.9gm

PN131N: Steel Scaffold Hook

- Brand: Karam
- Material: Alloy steel
- Minimum Breaking Strength: 23kN
- Net Weight: 473.0gm



FALL PROTECTION EQUIPMENT

Lanyards



PN241: Work Positioning Lanyard with Ring type Adjuster

- Rope / Webbing: Twisted rope
- Dia/Width: 14mm
- Max. Length: 2.0m



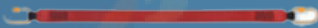
PN242: Work Positioning Lanyard with Grip Adjuster

- Rope / Webbing: Twisted rope
- Dia/Width: 14mm
- Max. Length: 2.0m



PN223: Restraint Webbing Lanyard (44mm) with Both Side Karabiner PN112

- Rope / Webbing: Polyester webbing
- Dia/Width: 44mm
- Size: 1.0m, 1.5m, 1.8m and 2.0m



PN261N: Restraint Forked Lanyard

- Rope / Webbing: Polyester Webbing
- Dia/Width: 44mm
- Length: 1.5m, 1.8m, 2.0m



FALL PROTECTION EQUIPMENT

Temporary Anchorage Line Systems



PN2000A: Guided Type Fall Arrester System on Flexible Anchorage Line

- **Brand:** Karam
- **Rope Grab:** Galvanized steel openable rope grab for fiber rope
- **Attachment Element:** Steel screw locking karabiner PN112(C)
- **Anchorage Line:** Polyamide twisted rope of dia 14mm to 16mm

Anchor PN910: Twisted Rope Anchorage Line(14mm)

- **Brand:** Karam
- **Made of** 3-strand Polyamide twisted rope of dia 14mm
- **One side loop; other side stop knot (also available with both side loops)**



Anchor PN910 (KRAL12): Kernmantle Rope Anchorage Line (12mm)

- **Brand:** Karam
- **Made of** Polyester kernmantle rope of dia 12mm
- **One side loop; other side stop knot (also available with both side loops)**



Horizon PN3000(BC): Horizon Temporary Horizontal Webbing Anchorage Line

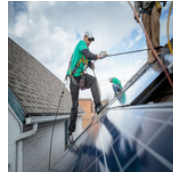
- **Brand:** Karam
- **Comes with** 2 cross arm straps PN804 each to tie off to the structure where the anchorage is required
- **Webbing Material:** Polyester webbing of 30mm





FALL PROTECTION EQUIPMENT

Self Contained Safety Kits



Maintenance & Window Cleaning Kit
Ref. PN 651



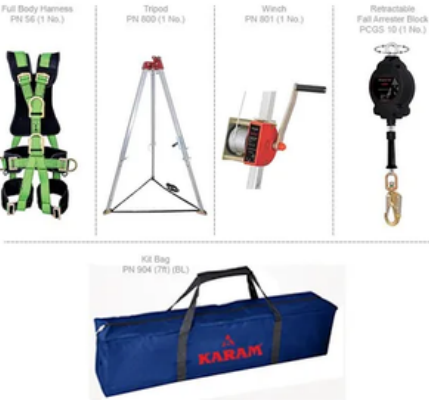
PN651: Maintenance and Window Cleaning Kit

Brand : Karam



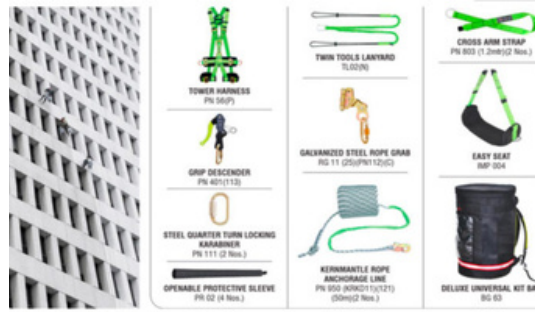
PN653: Telecom Tower Climbing Kit

Brand : Karam



PN654: Confined Space Entry/Egress Kit with Tripod

Brand : Karam



PN667 & PN667(P): Painter Kit (Essential) & Painter Kit (Premium)

Brand : Karam



FALL PROTECTION EQUIPMENT

Self Contained Safety Kits



Packard Lanyard
GEN-EA-01 (1 No.)



Anchorage Webbing Sling
GEN-AWS-01 (2 No.)



Work Positioning Lanyard
GEN-WPL-01 (1 No.)



Tool Bag
GEN-TB-01 (1 No.)



Rope Grab Fall Arrestor
GEN-RG-01 (1 No.)



Trained Rope Anchorage Line
GEN-TRK-14 (6M NPL)



Full Body Harness
GEN-03 (1 No.)



GEN-TTCK-03

Telecom Tower Climbing Kit

Brand: Garware

This kit is the perfect solution for personnel working on high rise towers.

This kit is specifically designed with larger hooks and easily adjustable lanyards to ensure the utmost safety and comfort for the user.

Equipped with all the necessary products required for tower climbing and maintenance jobs, this kit is a must-have for personnel working at height.

FALL PROTECTION EQUIPMENT

Rope Access and Rescue



PN401: Grip Descender
Brand : Karam



PN410: Descender Jumper
Brand : Karam



PN431: Figure of 8
Brand : Karam



PN402(R): Rope Clamp (Right Hand)
Brand : Karam



PN402(L): Rope Clamp (Left Hand)
Brand : Karam



PN402(A): Adjustable Webbing Foot Loop
Brand : Karam



PN401(W)(25): Webbing Cow's Tail
Brand : Karam



AP014: Aluminium Single Pulley Double Side Attachment
Brand : Karam



AP013: Aluminium Double Pulley Single Side Attachment
Brand : Karam



AP012: Aluminium Single Pulley Side Attachment
Brand : Karam



AP016: Double Tandem Pulley Small with SS Sheaves
Brand : Karam



IMP004: Easy Seat
Brand : Karam

FALL PROTECTION EQUIPMENT

Retractable Fall Arrester Blocks



Variants / Model



- PCGS02(IS):** Retractable Blocks with Galvanized Steel Wire Rope 2 Meter with Steel Snap Hook
- PCGS05(IS):** Retractable Blocks with Galvanized Steel Wire Rope 5 Meter with Steel Snap Hook
- PCGS16(IS):** Retractable Blocks with Galvanized Steel Wire Rope 16 Meter with Steel Snap Hook
- MIC02:** Micron Block 2 Meter Aluminium Swivel Quarter Turn Locking Bulb Type Hook with Fall Indicator
- PCGS06:** Retractable Blocks with Galvanized Steel Wire Rope 6 Meter with Steel Snap Hook
- PCGS10:** Retractable Blocks with Galvanized Steel Wire Rope 10 Meter with Steel Snap Hook
- PCGS20:** Retractable Blocks with Galvanized Steel Wire Rope 20 Meter with Steel Snap Hook
- PCGS25:** Retractable Blocks with Galvanized Steel Wire Rope 25 Meter with Steel Snap Hook
- PCWB05:** Retractable Blocks with Webbing 5 Meter with Steel Snap Hook



FALL PROTECTION EQUIPMENT

Confined Space Entry



PN800(DP): Tripod

- **Brand: Karam**
- Material of cast head and legs: aluminium alloy
- Every tripod is provided with pre-installed universal mounting attachments to easily mount the winch and retrieval blocks

PN900: Cantilever K-Pod

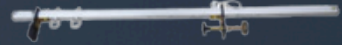
- **Brand: Karam**
- The K-pod is an ideal choice to provide overhead anchorage which can be mounted on different bases.
- Can be easily mounted on the floor as well as on the wall through special floor and wall mounting brackets which are made available as per need.





FALL PROTECTION EQUIPMENT

Anchorage



PN804 Type B Anchor: Cross Arm Anchor Strap

Brand : Karam

PN802 Type B Anchor: Door and Window Anchorages

Brand : Karam

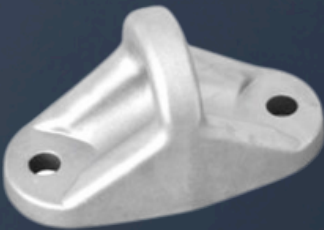


SA41- Type A Anchor: Flange Anchor

Brand : Karam

SA10- Type A Anchor: Steel Point Anchor

Brand : Karam



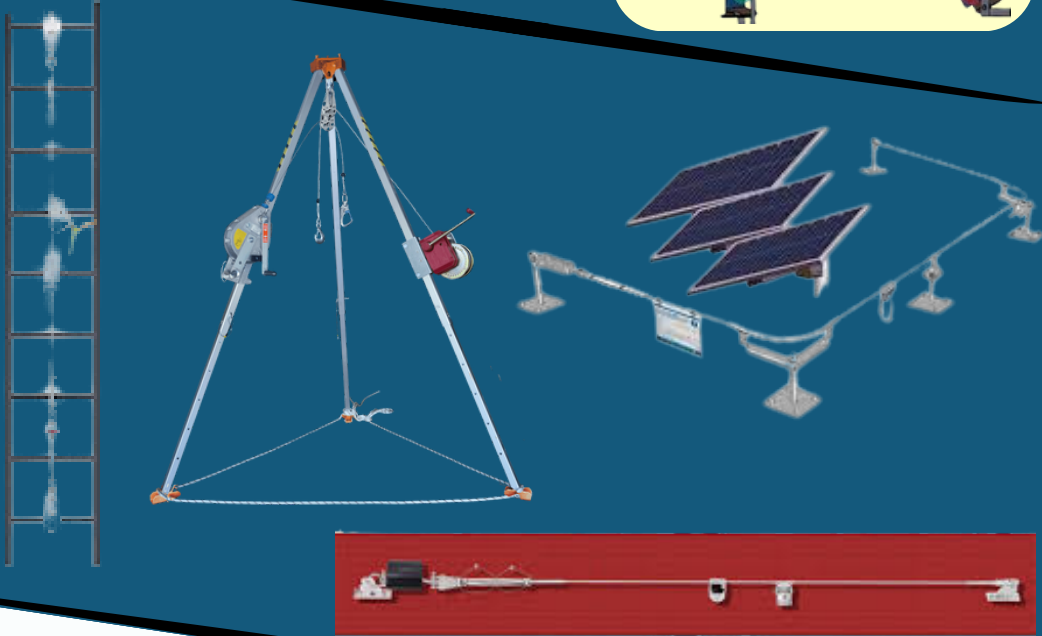
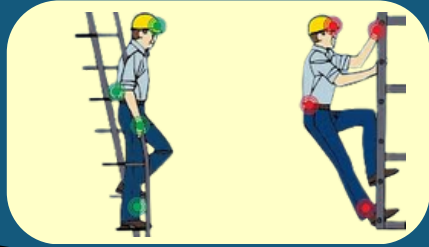
SA09- Type A Anchor: Aluminium Point Anchor

Brand : Karam



FALL PROTECTION EQUIPMENT

Permanent Life Line System



We Supply all the Permanent Life Line System



Horizontal Life Line for Loading and Unloading (Over the Head)

Horizontal Life line for Over the Roof

Horizontal Life Line for Solar Panel

Vertical Life Line for Ladder Climbing

Vertical Life Line for Confined Entry and Exit

RESPIRATORY PROTECTION SYSTEM



RESPIRATORY PROTECTION EQUIPMENT

Self Contained Safety Kits (SCBA)



VENUS SCBA 215-7ACX

SCBA (Self Contained Breathing Apparatus)

The kit is equipped with the following items:

- V-600 full face mask
- Carrying case
- Demand Valve
- Cylinder CCOE 6.8 L.
- Cylinder Steel 6.0 L.
- SCBA Back plate with V-777
- SCBA Back plate with V-666



3M™ Scott™ Air-Pak™ 75 SCBA

SCBA (Self Contained Breathing Apparatus)

Brands: Scott™

The kit is equipped with the following items:

- 3M™ Scott™ Cylinder valves
- 3M™ Scott™ Mask-Mounted Regulators (MMR)
- 3M™ Scott™ Thermal Imagers
- 3M™ Scott™ EPIC Communication accessories and
- Service and repair components for the above

RESPIRATORY PROTECTION EQUIPMENT

PAPR (Powered Air Purifying Respirator)



3M

3M Versaflo TR-300+ Series PAPR Systems

We offer the following items

3M

- TR-300 Series
- TR-600 Series
- TR-800 Series

Highlights

- Slim, lightweight unit is well-balanced and comfortable to wear for long work shifts.
- Audible and visual alerts for low airflow and low battery charge-level to keep you prepared and informed.
- Able to be worn in a belt or backpack

3M

RESPIRATORY PROTECTION EQUIPMENT

Supplied Air Line System (Respirator)



3M Aircar Filtration Unit ACU-03, Wall Mounted

- Supplies the highest quality air to the Supplied Air Respirator System and compressed air tools by removing water and oil aerosols, particles and odours from the facility supplied compressed air
- Compact dimensions allow wall mounting in compact spaces
- Can be used for up to three users or two users plus air tool

Highlights



3M Supplied Air Respirator Vortex Cooling Assembly V-100

- Complete systems include a supplied air hose, an air regulating valve, a breathing tube, and a helmet, hood, or other facepiece
- Includes the cooling tube, waist belt and holder
- A cost-effective way to provide a high level of respiratory protection

HIGHLIGHTS



3M™ Adapter V-199

Highlights

This adapter is designed to adapt the V-100, V-200, V-300 and V-400 Air Regulating Valves to accommodate the BT-200 and BT-222 Breathing Tubes.



RESPIRATORY PROTECTION EQUIPMENT

Supplied Air Line System (Respirator)



3M Dual Airline Back-Mounted Adapter Kit SA-2000



Highlights

- This kit delivers air to both sides of the facepiece for a comfortable and balanced 3M™ Supplied Air Respirator System
- Select the ideal 3M products for your PAPR and supplied air respirator needs
- Easy to use and configure & Back-mounted, high pressure air

3M Versaflo Breathing Tube BT-20S, Lightweight



Highlights

- Size: Small/Medium
- Protective breathing tube covers available to lengthen service life of breathing tubes
- Range of breathing tubes and accessories
- Designed for use with certain 3M Headtops and Air Delivery Units





RESPIRATORY PROTECTION EQUIPMENT

Supplied Air Line System (Filter Panel)



3M Compressed Air Filter and Regulator Panel W-2806

Standouts

This panel is designed to filter and regulate air being delivered to the supplied air respirator.

It has a maximum capacity of 50 cfm at 105 psig.
Note: This unit will NOT remove carbon monoxide (CO) from compressed air source.

- ▶ Industrial Interchange Fittings.
- ▶ Coiled hoses should be used in single length only. They cannot be combined.
- ▶ No filters, cartridges or batteries to maintain.
- ▶ 3M's range of supplied air valves can cool or heat air by up to 50°F (28°C)

3M Supplied Air Hose W-2929



3M Supplied Air Respirator Hose W-9435

- ▶ 3/8 inch inner diameter
- ▶ MPT fittings at both ends and accepts 1/4 inch FPT fittings
- ▶ Complete systems include a supplied air hose, an air regulating valve, a breathing tube, and a helmet, hood, or other facepiece
- ▶ High pressure system



RESPIRATORY PROTECTION EQUIPMENT



Hood



3M Versaflo High Durability Hood with Integrated Head Suspension, S-533L, Medium/Large

- ☛ Fabric is constructed of polyurethane coated knitted polyamide
- ☛ Visor constructed of coated polycarbonate
- ☛ Ensure the use of compatible 3M and Versaflo Headgear for your 3M Products
- ☛ Sleek shape



3M Versaflo Hard Hat Assembly, M-305, standard visor and face seal

- ☛ Includes a standard visor and standard face seal
- ☛ Lightweight and comfortable
- ☛ Accessory options available for protection to help handle the environments you encounter
- ☛ Can be used with a range of 3M Peltor hearing protection as well as an attachable microphone for ease of communication



3M Versaflo Respiratory Helmet Assembly M-407, with Premium Visor and Flame Resistant Shroud

- ☛ Includes a premium visor and premium shroud
- ☛ Coated visors provide added chemical and scratch resistance
- ☛ A deflector allows users to direct the airflow inside the headtop for increased control and comfort
- ☛ Fully-adjustable head suspension that includes textile straps for optimal fit and weight distribution



3M Versaflo Respiratory Hard Hat Assembly M-307, with Premium Visor and Face Seal

- ☛ The M-307 assembly includes a M-927 Visor and M-937 Face seal
- ☛ The M-927 visor is made of coated polycarbonate
- ☛ The M-937 face seal is made of flame resistant polyester



LIFTING EQUIPMENT

LIFTING EQUIPMENT



Lifting equipment refers to a diverse range of machinery, tools, and accessories used to lift and move heavy or bulky loads safely and efficiently.

This equipment includes devices such as cranes, hoists, forklifts, and jacks, as well as accessories like slings, chains, and hooks. Lifting equipment is crucial in various industries, including construction, manufacturing, and warehousing, where the handling of heavy materials is common.

Benefits

- Increased Efficiency
- Improved Safety
- Versatility
- Cost-Effective
- Precision and Control
- Reduced Physical Strain
- Compliance



Polyester Round Webbing Sling

Brand: Garware



Rope

Brand: Garware



Safety Belt

Brand: Garware



Indef-M Chain-Pulley-Block

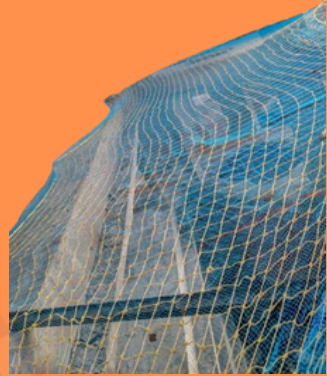
Brand: Indef



LIFTING EQUIPMENT



Wire Rope Slings



Safety Net
Brand: Garware



Bow Shackle



D-Shackle



Four Leg Wire Rope Slings



Mild Steel Wire
Rope Clamp





FIRE EXTINGUISHER



FIRE EXTINGUISHER



Fire Ball



Modular Fire Extinguisher



Safe Pro 4.5kg CO2 Type Fire Extinguisher

CO2
2kg, 4.5kg, 6.5kg, 9kg

Mechanical Foam
9L, 25L, 45L
With & Without
Trolley

Types of Extinguisher we offer
ABC, Stored Pressure
1kg, 2kg, 4kg, 6kg, 9kg, 2.5kg, 50kg
ABC, DCP type
4kg, 6kg, 9kg

FIRE EXTINGUISHER



Red Mild Steel D Class
Fire Extinguisher



K- TYPE K Class Kitchen
Fire Extinguisher

Fire Extinguisher Class Chart			
		Class A: Ordinary Combustibles	Wood, paper, cloth, trash, plastics, and other solids that are not metal
		Class B: Flammable or combustible liquids or gases	Gasoline, oil, petroleum greases, tars, oils, oil-based paints, solvents, lacquers, alcohols, flammable gases
		Class C: Electrical	Energized electrical equipment (plugged-in)
		Class D: Metals	Magnesium, titanium, zirconium, sodium, lithium, and potassium
		Class K: Combustible cooking	Grease or oil, such as vegetable oils, animal oils, or fats in cooking appliances

WELDING EQUIPMENT





WELDING EQUIPMENT



Regulator



Cutting Torch



Nossle



Flash Back Arrester





WELDING EQUIPMENT



We are having a wide range of welding equipment can be really beneficial for your business.



Arc Electric Welding Machine

Take a Look at Our Product Inventory

- Arc Welding
- Tig Welding
- Mig Welding

with Machine & Spares



Iron Welding Rod



Copper Welding Cable





ROAD TRAFFIC & SIGN SAFETY



ROAD SAFETY EQUIPMENT



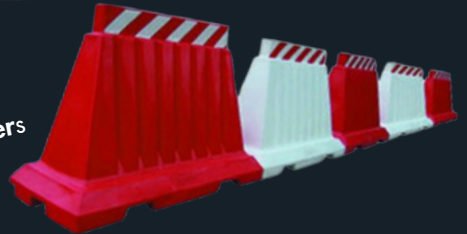
Traffic Cone



Spring Post



Stainless Steel Queue Manager with Red Belt

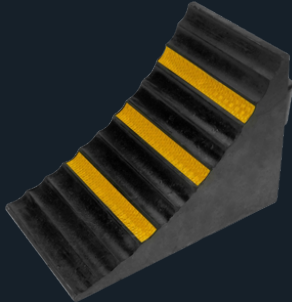


Water Filled Road Barriers





ROAD SAFETY EQUIPMENT



Wheel Stopper



Rubber Speed Breaker



Solar Road Stud



Convex Mirror



Solar Blinker

Empowering safer journeys with our comprehensive road safety products.



Why Choose Us

At CWLC, we pride ourselves on our exceptional customer service and our commitment to workplace safety. Our team of safety experts is always available to answer any questions you may have and help you find the right products for your needs.

Customer Focus

At CWLC, we prioritize your safety above all else. Our mission is to provide high-quality safety equipment that protects you in any environment, ensuring you return home safely to your loved ones every day.

Commitment to Quality: We are committed to providing safety equipment that meets the highest standards of quality and reliability. Each product is rigorously tested to ensure it performs flawlessly when you need it most.

Expert Guidance: Our team of safety experts is here to assist you in choosing the right equipment for your specific needs. Whether you're a professional in the field or an individual looking to enhance your personal safety, we're here to help.

Customer Satisfaction Guarantee: We stand behind our products and want you to be completely satisfied with your purchase. If you're not happy with your safety equipment for any reason, please contact us, and we'll make it right.

At CWLC, your safety is our priority. Thank you for choosing us as your partner in safety.



OUR BRAND PARTNERS



ARE YOU PROTECTED?



Have any queries?
We're here to help.

Contact Us

Support
info@cwlgroup.com
98402 98786
98410 30272

**Sales / Sight
Survey Enquiry**
sales@cwlgroup.com
99400 95375

Business Hours
Monday - Saturday:
10.30 AM to 07.30 PM



Our Head Office

Chennai (Tamil Nadu)
No.124, 1st Floor, Broadway Main Road
(Opp. Union Bank of India), Chennai – 600 108



**SCAN
FOR LOCATION**

Tada (Andhra Pradesh)
No.1, Western Side of National
Highways, Tada Village, Tada Mandal
SPSR, Nellore – 524 401

Our Branches

Cochin (Kerala)
No.1380, Karikkulam Building,
Ground Floor, T.D.Road, Ernakulam,
Cochin – 682 011

CALCUTTA WELDING & LIFTING COMPANY

A Reputed House for Genuine Welding & Lifting Products